



GREENBELT REPORT FOR ANNUAL MEETING 2015

DIANE HALLINEN
CAROLE GANNON

OUTLINE

- Perimeter Report
- Invasive Control Projects
- Greenbelt activities
- Plans for 2016



DLPOA Greenbelt

[Maps](#)

[Invasive Plants](#)

[Invasive Control Procedures](#)

[Prescribed Burns](#)

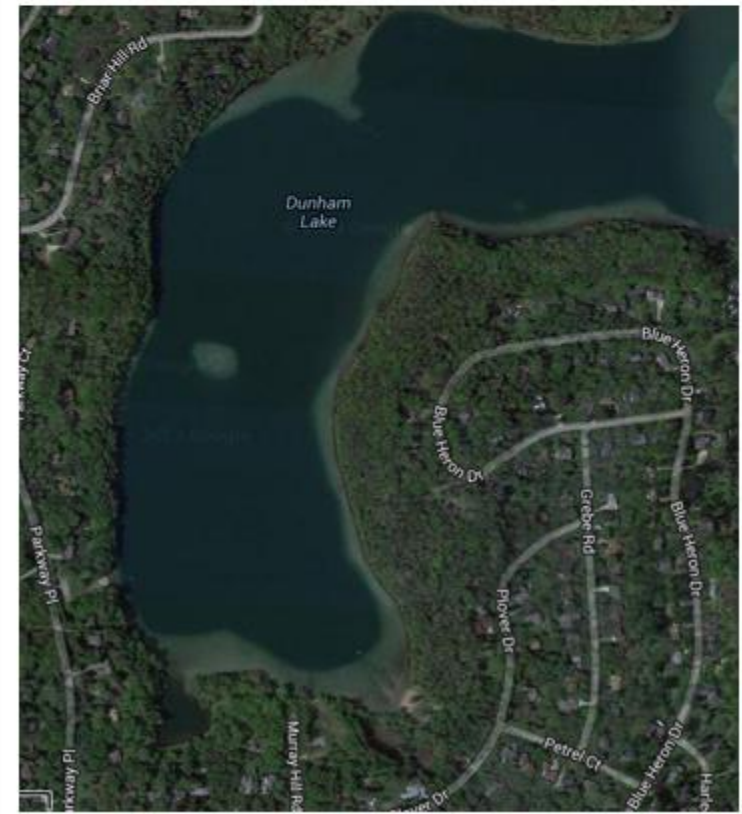
[Dunham Lake and Greenbelt Geology](#)

[Greenbelt Forest Information](#)

[The Fen](#)

[Special Critters and Plants](#)

The Greenbelt is the common area that surrounds most of Dunham Lake. It is owned collectively by members of the DLPOA. It is private property. The State of Michigan owns Dunham Lake.



[2015 Budget Proposal](#)

[Encroachment Abatement Procedure](#)

[Fine Policy](#)

[Sample Encroachment Letter](#)

[Sample Reply to Encroachment Letter](#)

[Archived Encroachment Reports](#)

[Archived Annual Meeting](#)

- [1999](#)
- [2000](#)
- [2001](#)
- [2002](#)
- [2003](#)
- [2004](#)
- [2005](#)
- [2006](#)
- [2007](#)
- [2008](#)
- 2009
- [2010](#)
- [2014](#)
- [2015](#)

2015 Perimeter Inspection

The Perimeter Inspection was held May 9, 2015. In attendance were Carole Gannon, Terry Gannon, Diane Hallinen, Jeff Masters and Scott Oswald. Scott was present for the entire Livingston side and up to post 100 on the Oakland side.

We started out inspecting the Livingston side. Seven issues requiring letters were found.

Between posts 14 and 15 we discovered [mowing](#) and a decorative cart. A [letter](#) was sent to the owners of lot 34.

Between posts 33 and 34 there are a number of concrete blocks that will eventually be replacing the rotting wooden steps. This is not an encroachment.

Between posts 56 and 57 [mowing of a path](#) was discovered. A [letter](#) was sent to the owners of lot 71.

Between posts 57 and 58 [mowing of a path](#) was discovered. A [letter](#) was sent to the owners of lot 72.

Between posts 72 and 73 [damaged pine trees](#) were discovered. A [letter](#) was sent to the owners of lot 81. This is a lot with multiple previous encroachments. This issue will be referred to the civic committee as per the encroachment abatement procedure.

Between posts 73 and 74 a [mowed path](#) was discovered. A [letter](#) was sent to the owners of lot 82.

Between posts 74 and 75 a [dead uprooted shrub](#) was found on the greenbelt. A [letter](#) was sent to the owners of lot 83, since this lot is close to the this area. However, we are not certain where this shrub came from. Dumping of yard waste is not permitted on the common area.

Between posts 76 and 77 a [bench and brush pile](#) were discovered on the common area. A [letter](#) was sent to the owners of lot 86.

The wood pile for the pig roast was noted to be located by post 77. This is not an encroachment.

We then inspected the Oakland side. Six issues requiring letters were noted.

Between posts 83 and 84 a [silt fence](#) was found to be partially located on the common area. A [letter](#) was sent to the owners of lot 88.

Between posts 88 and 89 a [motor boat on a trailer](#) was found on a cleared area of the common area. Since obvious clearing of vegetation has occurred the lot owners of lot will get a letter and this case will be referred to the Civic Committee. The Board will be getting an estimate of the cost of damage and will request the Civic Committee to impose a fee on the lot owners to repair the damages.



73

59

74

60

61

75

62

76

63

77

64

damaged trees

mowing

76

86

77

75

67

68

69

72

73

74

79

80

81

82

83

78

70

71

bench and brush pile

POWER

MOWING – SEVEN LOTS

- Mowing – Seven lot owners mowed the Common Area.
- A lawn service's careless mowing is not an excuse for an encroachment.
- Residents can not mow a spot for their boat.
- Resident's do not get to maintain a path from their property though the Common Area. The Common Area can not be mowed. Wood chips, gravel or other substances can not be placed on the Common Area.



PERSONAL PROPERTY ON THE COMMON AREA - SEVEN LOTS

- Items include a decorative cart, motor boat, fish line, rocks and bricks, bench, silt fence and a satellite dish.





Sadly, residents have dumped left over garden material including snow on the mountain and other non-native plant material



INVASIVE PLANT CONTROL

- Major efforts this year controlling..
 - Garlic mustard – hired local teens, collected over 15 bags
 - Asian bittersweet - 8 bags of seeds
 - Dog Stranglevine
 - Vinca and other invasive groundcovers
 - Norway maple
 - Autumn Olive – special thanks to Herb Cole!



CYNANCHUM ROSSICUM AKA DOG STRANGLEVINE AND SWALLOWWORT



- Brought into the lagoon via straw bales from a lot owner's yard.
- The leaves of the pale swallowwort are larger when they are closer to the stem and decrease in size as they move away from the stem. They are in the shape of an ellipse or an oval and contain smooth margins and major veins underneath.¹ The glossy, dark green leaves grow opposite on the stem and are ovate to elliptical. The flowers appear near the top of the plant and grow on stalks that come from the leaf axils



VINCA MAJOR AND MINOR, IVY AND OTHER GARDEN ESCAPES THAT ARE INVADING THE GREENBELT

- Multiple areas of the Common Area are being over run with groundcovers that started out in adjacent lots owner's backyards.
- These plants crowd out native plants and do not belong in our Oak dominated ecosystems.
- Initial efforts at control were during this past winter. These efforts will continue.
- We will observe these areas for at least 2 years before making any decisions in regards to revegetation. We are hopeful that a seedbank of native plants remains in these areas. These plants are difficult to eradicate, we anticipate needing to do follow up work over the next couple of years. If possible, we will burn these areas this spring to hasten revegetation of native plants.



PRAIRIE FEN

- Reclaimed portion of east beach parking lot
- Glossy buckthorn, Asian bittersweet, phragmites, vinca minor control



OAKLAND SIDE

- Small pockets of non-seedbearing Asian bittersweet
- Scattered garlic mustard lake side of upper trail, heavy infestation house side of trail.
- Extensive groundcover issues, work in progress



OAKLAND SIDE NORWAY MAPLE PROJECT

- In March, 2015 most of the Norway Maples on the Oakland side were treated with a herbicide called Habitat.
- Those close to the trail were cut.



LAGOON

- Follow up on extensive Asian bittersweet. Found multiple seed bearing plants
- Hotspot for our swallowwort. Sprayed in July, hand picked seed pods this fall.



LIVINGSTON SIDE

- Major infestation of Asian bittersweet control
- Extensive Norway maple population control in progress
- Large areas of invasive groundcover – work just beginning.



NATURE WALK HELD OCT 10, 2015 – JOHN AND LARRY



- Larry did a poster presentation out of his trunk. He discussed the geology, hydrology and history of Dunham Lake. He also told us housing values are higher in communities with natural features. John pointed out our ancient oaks and other cool plants and suggested management strategies.

CAROLE TALKED TO LOCAL GOVERNMENT OFFICIALS

- **On August 3, 2015 Carole presented at a DEQ workshop called Protecting Michigan's Inland Lakes: Lake & Wetland Protection Tools for Local Governments. She discussed our Greenbelt and how we manage it.**
- **This week Carole met with Hartland Township officials and Sen Hune to discuss establishing an ordinance on Oak Wilt Disease control. Oak Wilt is in the local area and is major threat to the greenbelt and neighborhood oaks.**

GRANT PROPOSAL - USE OF NOVEL INJECTION METHODS AND BIOPESTICIDES ON INVASIVE SPECIES IN WOODLANDS

- Carole applied for a grant from the DNR to fund future restoration efforts.
- The grant was scored high, but did not receive funding.
- Carole was encouraged by the reviewers reapply for 2016.

PLANS FOR 2016

- Spring burn – both Oakland and Livingston side. Will not do the fen.
- Follow up on Asian bittersweet control. Mandatory since it re-sprouts and we have a large seed bank.
- Norway maple control. Will do drill and fill where appropriate.
- Invasive ground cover- will burn this spring where possible.
- Will of course continue our annual push to control garlic mustard, glossy buckthorn, autumn olive and especially swallowwort.
- Summer nature program
- Will be vigilant in our efforts to identify and control new threats as they emerge.