

Date 10/31/15

Plant ground cover

Herbicide Renovate 3 5% with Scythe 1%

Invasive plant control report worksheet

Instructions:
When completed, print to PDF, name file as follows
PlantDateLocation .

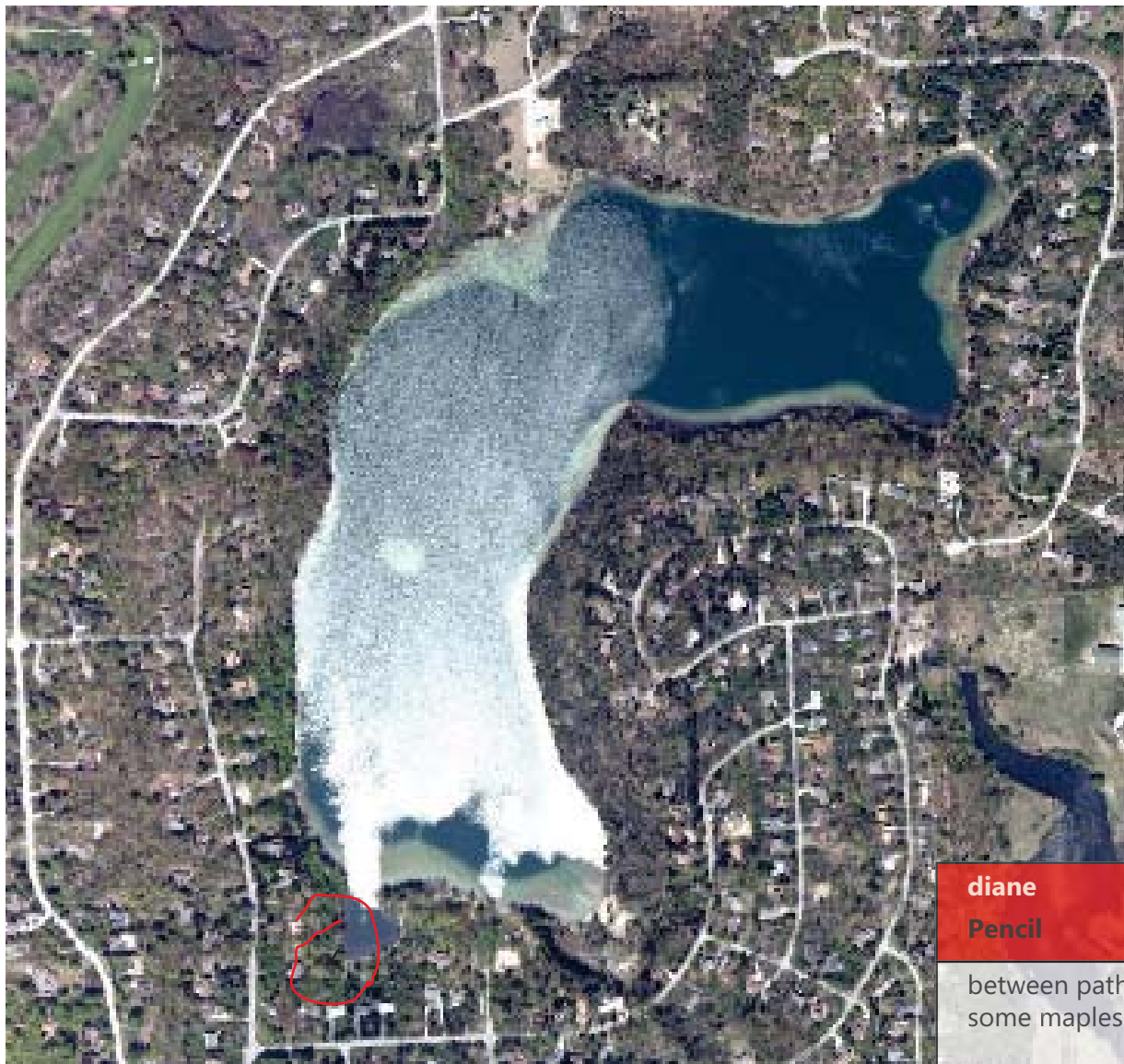
Herbicide solution volume in mls

Time worked, in minutes 45

Gallons of herbicide used 1

- Hand Pull
- Cut & Dab
- Spray

With no space between words, each new word starts with a capital letter. Plant is either Glossy,Asian,Dog, Purple, Autumn, Norway, cattail Other
Date is written as 5Oct2015 and Location is either Noak, Soak, Nliv or Sliv which refer to North Oakland, South Oakland, North Livingston or South Livingston.
Type comments in the box at the bottom of this form. Email form to hallinen@yahoo.com Or click the submit form button



Click locations where invasive plant were treated

Open a second form if more than one plant species was treated.

Submit Form

diane
Pencil

between paths, need to kill some maples in here.

by post 60. about 10% leaf cover. temp 50. Anticipate rain in 6 hours from spraying. Didn't do entire section, ran out