

Date

Plant

Herbicide

Invasive plant control report worksheet

Instructions:
When completed, print to PDF, name file as follows

Herbicide solution volume in mls

Time worked, in minutes

PlantDateLocation

Gallons of herbicide used

- Hand Pull
- Cut & Dab
- Spray

With no space between words, each new word starts with a capital letter. Plant is either Glossy,Asian,Dog, Purple, Autumn, Norway, cattail Other
Date is written as Oct52015 and Location is either Noak, Soak, Nliv or Sliv which refer to North Oakland, South Oakland, North Livingston or South Livingston. Type comments in the box at the bottom of this form. and on pages where you make marks.

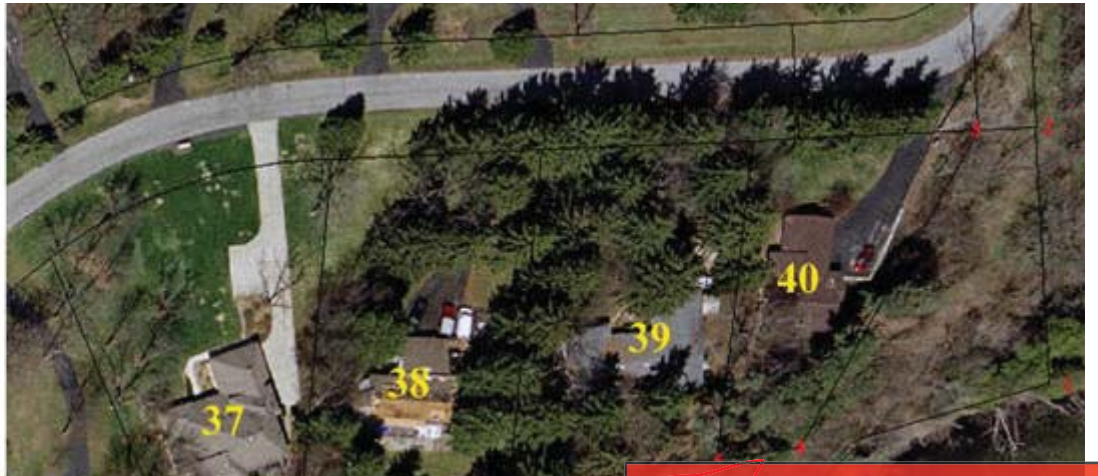


Click locations where invasive plant were treated

Open a second form if more than one plant species was treated.

North Livingston

Posts 1 through 17



diane
Pencil
spray, plants just emerging



diane
Pencil

diane
Pencil