

Date 11/14/15

Plant ivy and vinca

Herbicide Glyphosate 5% with scythe 1%

### Invasive plant control report worksheet

Instructions:  
When completed, print to PDF, name file as follows  
PlantDateLocation .

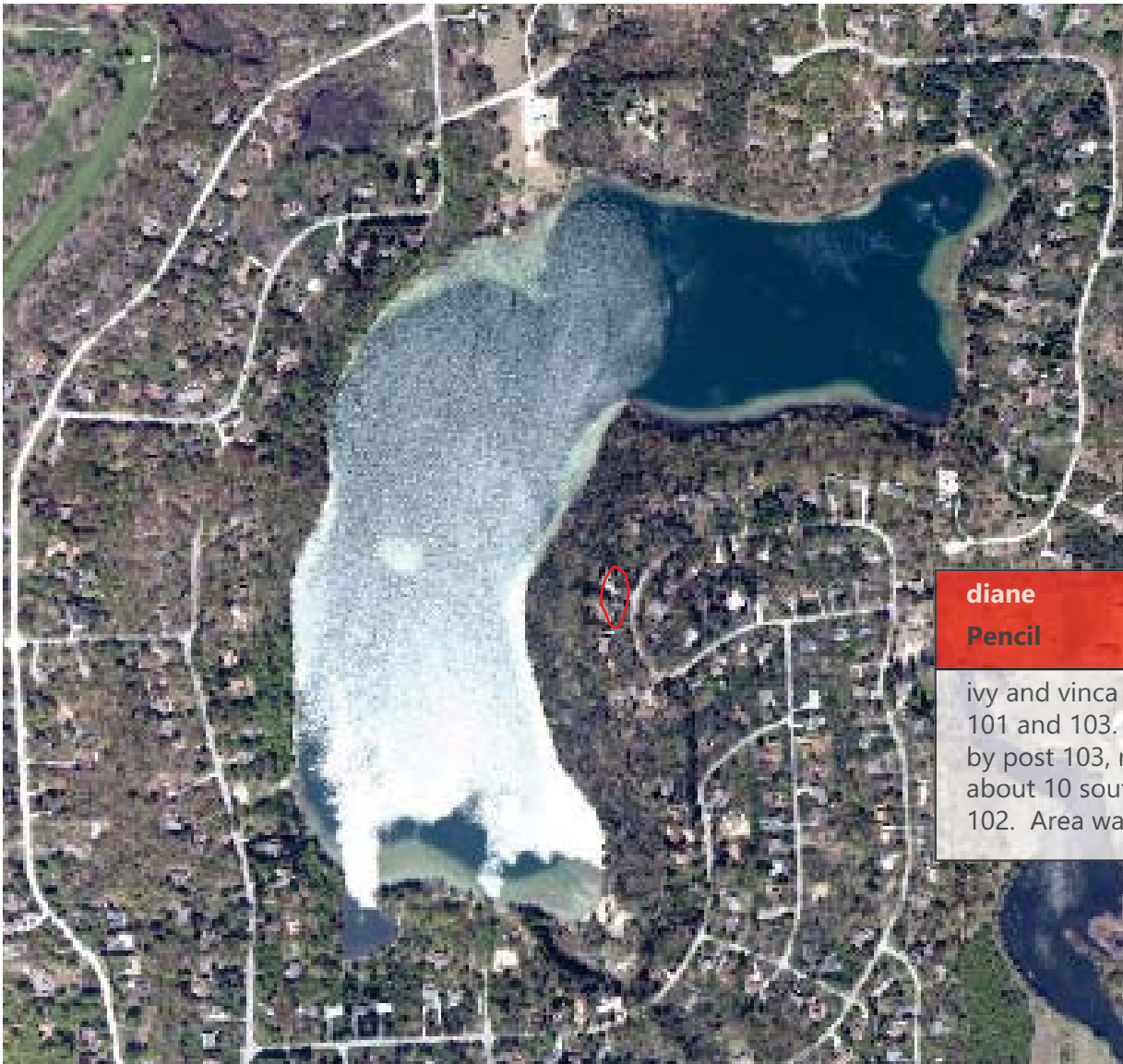
Herbicide solution volume in mls

Time worked, in minutes 60

Gallons of herbicide used 1

- Hand Pull
- Cut & Dab
- Spray

With no space between words, each new word starts with a capital letter. Plant is either Glossy,Asian,Dog, Purple, Autumn, Norway, cattail Other  
Date is written as 5Oct2015 and Location is either Noak, Soak, Nliv or Sliv which refer to North Oakland, South Oakland, North Livingston or South Livingston. Type comments in the box at the bottom of this form. Email form to hallinen@yahoo.com Or click the submit form button



Click locations where invasive plant were treated

Open a second form if more than one plant species was treated.

**diane**  
**Pencil**

ivy and vinca between posts 101 and 103. Spotty coverage by post 103, need to spray about 10 south/west towards 102. Area was sprayed last year

Submit Form

Temp 45, sunny, sprayed at 4 pm. Tomorrow is suppose to be in the 50s and sunny. No rain forecasted for the next 24 hours.